



**GET READY** FOR INNOVATION  
IN GLOBAL NORMS WITH  
**RAM ROBOTICS!**



# CONTENTS



02

**About Us**



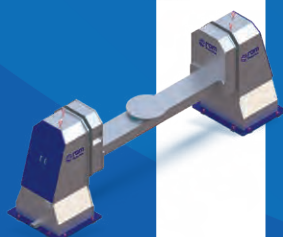
03

**How Do We Run  
The Process?**



05

**Arm Type  
6 Axis Robots**



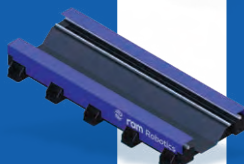
07

**Robot Positioners**



13

**Gantry Type  
Robot Positioners**



17

**Slider**



19

**Our Applications**





## ABOUT US

### Every robot we make is a marvel of engineering!

RAM Robotics, in the applications of source-handling-feeding and packaging processes in 2017 It was established by expert managers who have made a name for themselves with many projects in the country.

Expert engineering staff, experienced staffs in manufacturing and sectoral basis of customers It serves its target audience with the principle of finding solutions to its problems. The solutions offered with the motto "Every job we do is an engineering marvel" puts its customers one step ahead in their field.

### Your Solution Partner in Robotic Systems

RAM Robotics determines the demands of its customers and performs the necessary analyzes and reviews of the process.

Through static and dynamic project design, analytics and calculations Perform computer-aided simulations and tests and comply with required quality standards.. You produce it and deliver it to the customer after quality control.



Founded in 2017



Infinite  
Satisfaction



Full Support Before and  
After Sales



Unique Production as  
Fingerprints for Every  
Industry



**HOW DO WE RUN  
THE PROCESS?**

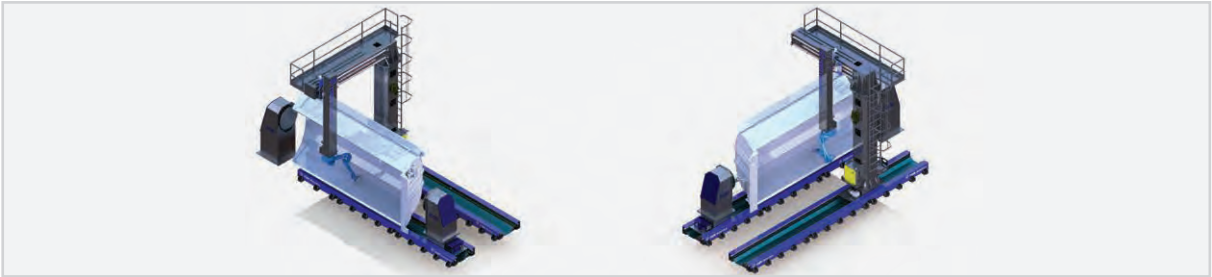


## HOW DO WE RUN THE PROCESS?



### 1- ) We Make Correct System Design With On-Site Detection

We examine your products in your company, during the production phase, and determine the right equipment, software and process management for the products and data for the right system design.



### 2- ) Creating the System in 3D Design Programs

After receiving your workpieces from you within the scope of confidentiality agreement, we create your system in a virtual environment by determining the most suitable peripheral equipment for your workpiece in 3D design programs and analysis programs.



### 3- ) Design Validation via Simulation Program

We conduct simulation studies to control the access and programming of the design or system. In this way, we prevent you from purchasing the wrong system before investing.



### 4- ) Bidding

We come to your visit again to share with you the results of the work done and we present the operation of the system to you as a simulation. We present you the mathematical data that emerged during the work on your workpiece. In this way, we provide that you make the right investment and also provide you with all the necessary data for the investment.





# **ARM TYPE 6 AXIS ROBOTS**

---



## ARM TYPE 6 AXIS ROBOTS

### AR 700



<b>Loading Capacity</b>	8 kg
<b>Maximum Working Range</b>	727 mm

### AR 900



<b>Loading Capacity</b>	7 kg
<b>Maximum Working Range</b>	927 mm

### AR 1440



<b>Loading Capacity</b>	12 kg
<b>Maximum Working Range</b>	1440 mm

### AR 1730



<b>Loading Capacity</b>	25 kg
<b>Maximum Working Range</b>	1730 mm

### AR 2010

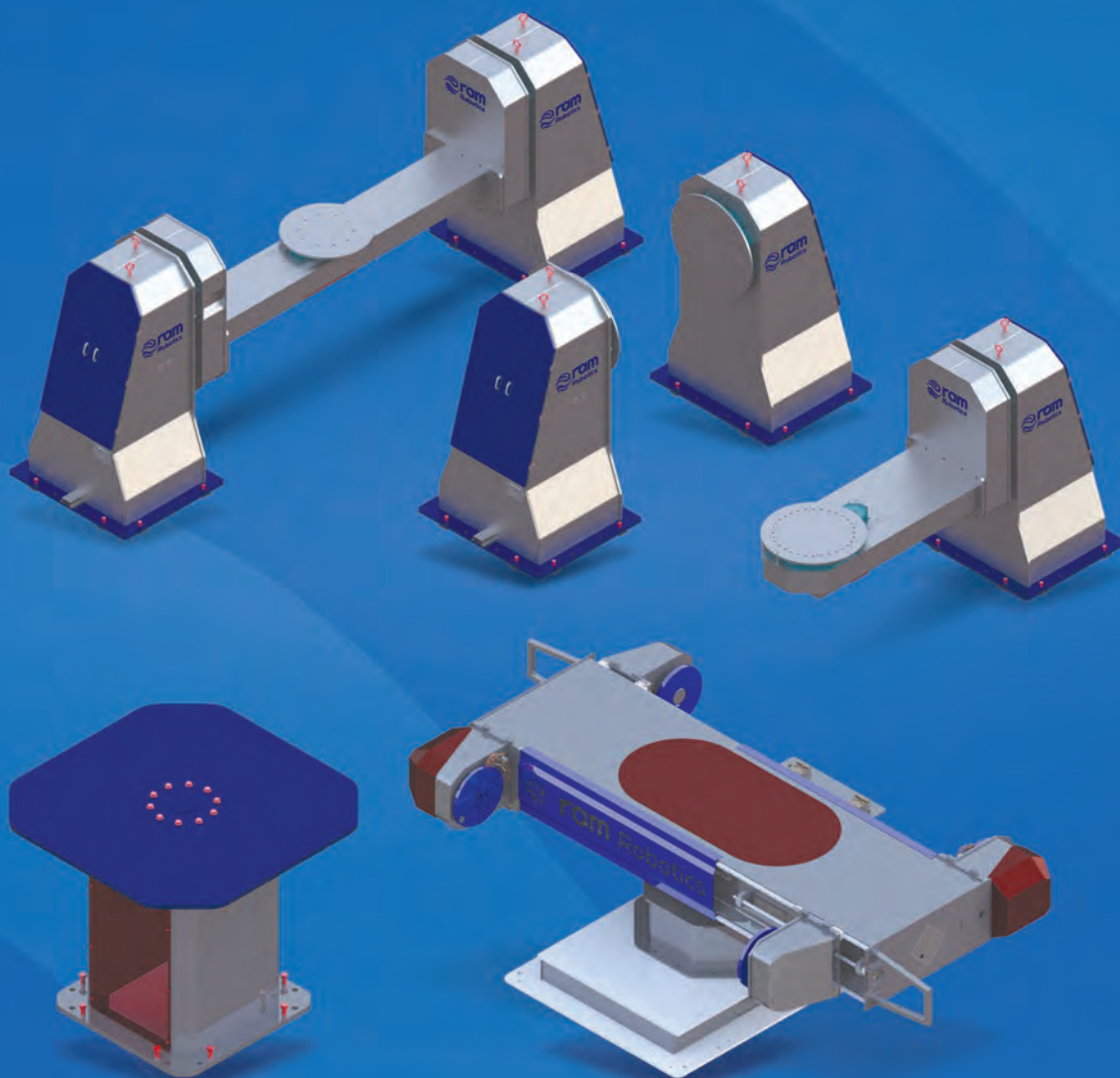


<b>Loading Capacity</b>	12 kg
<b>Maximum Working Range</b>	2010 mm

### AR 3120



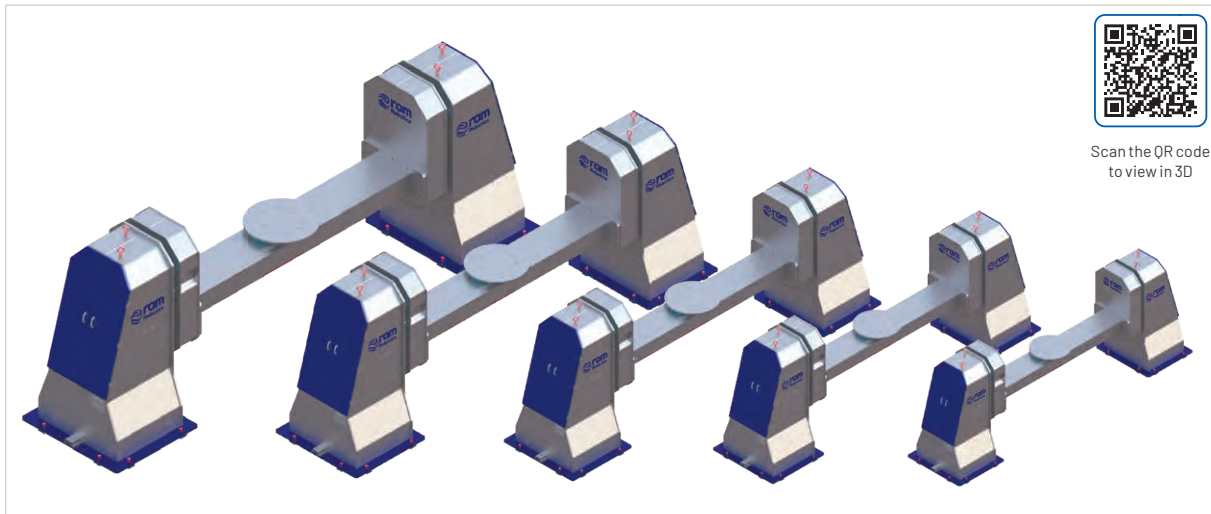
<b>Loading Capacity</b>	20 kg
<b>Maximum Working Range</b>	3124 mm



# ROBOT POSITIONERS

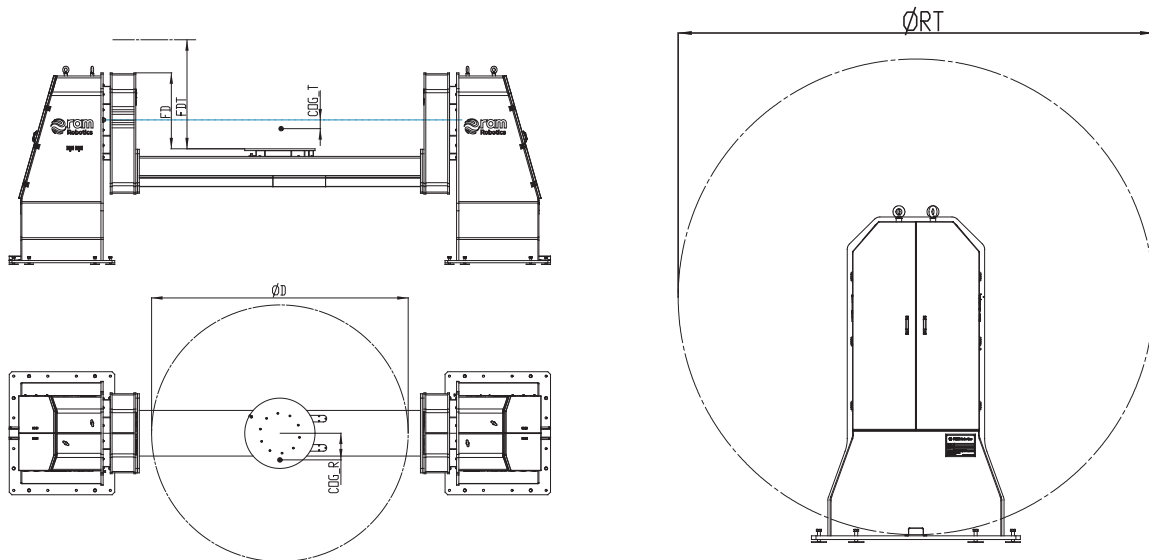
---

## DROP CENTER POSITIONER - 2 Axis



- RAM-RDP, up to 20,000 kg carrying capacity light to medium capacity and biaxial Dropcenter type used for heavy duty application are positioners.
- Low weight and high strength It has welded steel construction. Other joint with positioners can be used as a component.
- It is unique designs in its field with its latest technology product range and Innovative manufacturing methods
- It is produced aiming at easy using, maintenance and assembly.

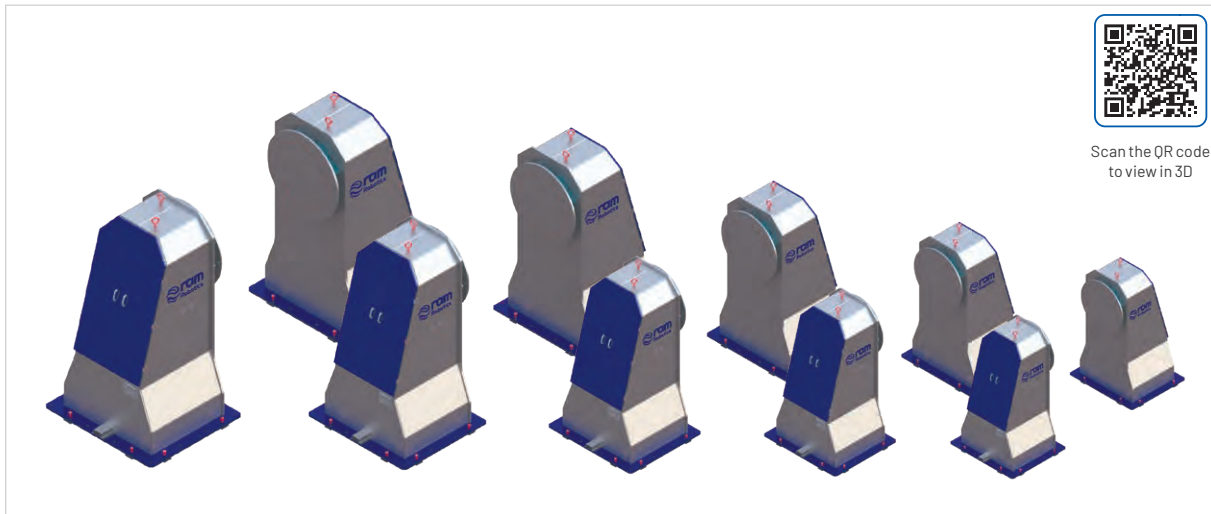
**OPTION:** Special paint color.



Technical Data	RDP-5kN	RDP-10kN	RDP-20kN	RDP-30kN	RDP-50kN	RDP-100kN	RDP-200kN
Maximum Carrying Capacity Per Station (kg)	500	1000	2000	3000	5000	10000	20000
Maximum Workpiece Clamping Diameter (RT) (mm)	RT*	RT*	D*	D*	D*	D*	D*
Turning Radius (D) (mm)	D*	D*	RT*	RT*	RT*	RT*	RT*
Repeatability (mm)	0.05	0.05	0.05	0.05	0.05	0.05	0.05
Max Speed (rpm)	15	15	10	10	6	4	3



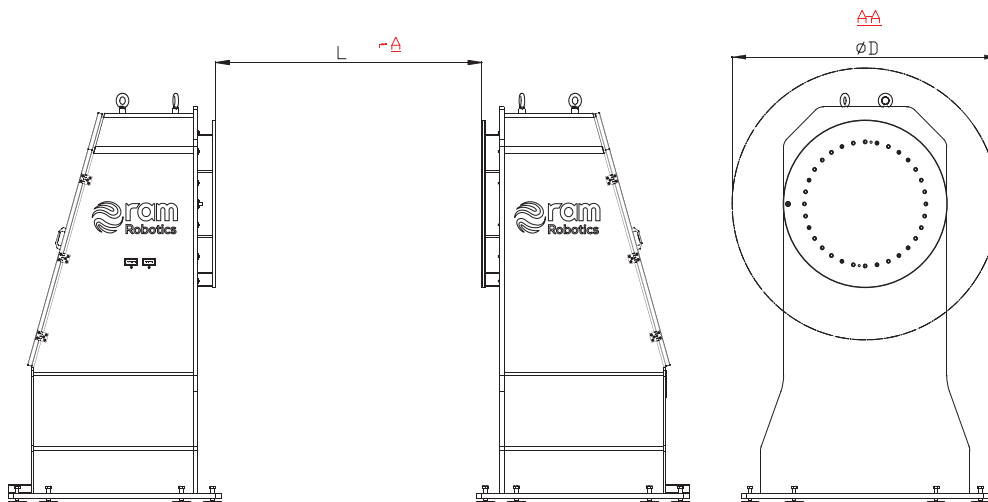
## K POSITIONER



- RAM-RKP, up to 20,000 kg carrying capacity They are single axis positioners used for light, medium and heavy duty applications.
- Low weight and high strength It has welded steel construction. Other positioners as components available.
- It is unique designs in its field with its latest technology product range and Innovative manufacturing methods.
- It is produced aiming at easy using, maintenance and assembly.

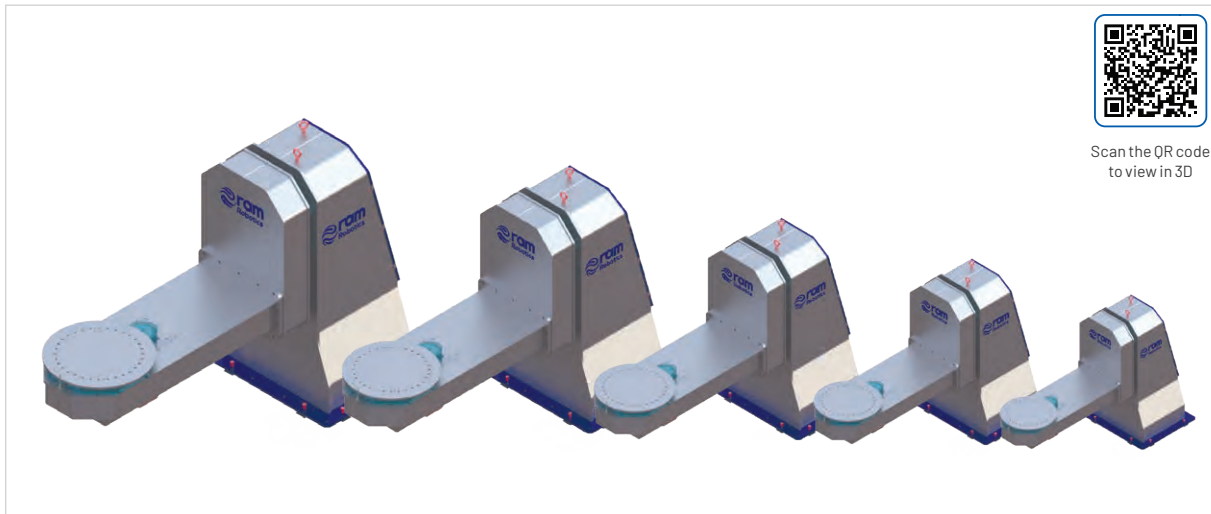
### OPTIONS:

- Z axis motion unit. •Slider for idle positioner. •Special paint color.



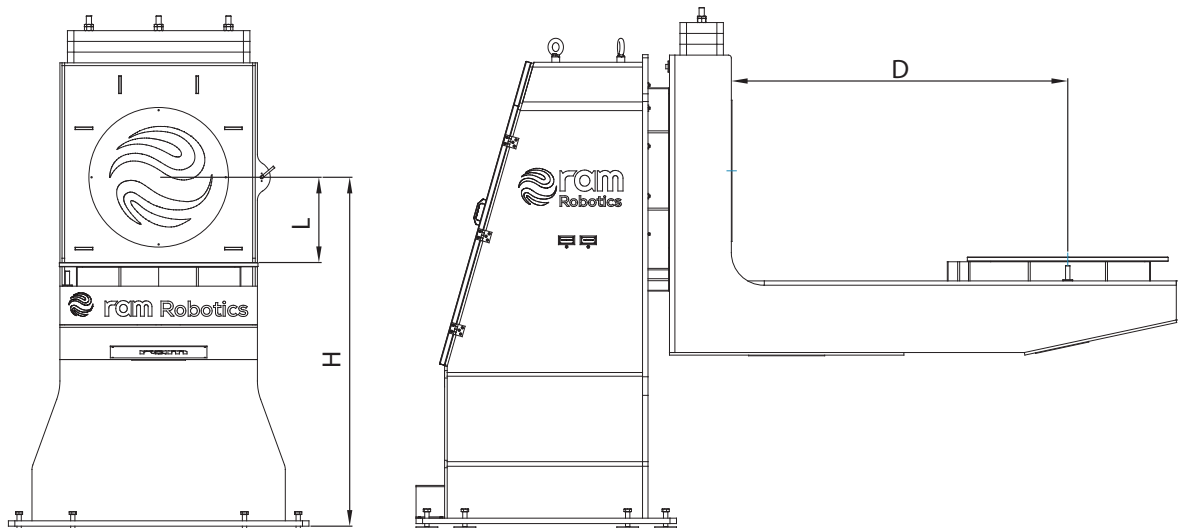
Technical Data	RKP-5kN	RKP-10kN	RKP-20kN	RKP-30kN	RKP-50kN	RKP-100kN	RKP-200kN
Maximum Carrying capacity Per Station (kg)	500	1000	2000	3000	5000	10000	20000
Maximum Workpiece Clamping Diameter (D)(mm)	2000	D*	D*	D*	D*	D*	D*
Maximum Workpiece Clamping Spacing (L)(mm)	L*	L*	L*	L*	L*	L*	L*
Height of Fixture Disc Center (H)(mm)	1000	H*	H*	H*	H*	H*	H*
Repeatability (mm)	0.05	0.05	0.05	0.05	0.05	0.05	0.05
Max Speed (rpm)	15	15	10	8	6	5	3,5

## L POSITIONER



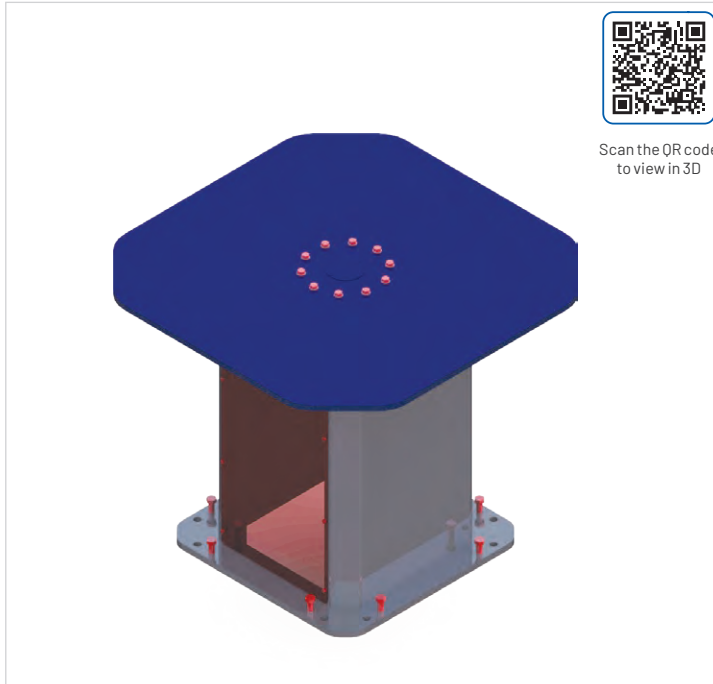
- RAM-RSP, They are two-axis L type positioners used for light, medium and heavy duty applications up to a carrying capacity of 20,000 kg.
- Low weight and high strength It has welded steel construction. Other It can be used as a common component with positioners.
- It is unique designs in its field with its latest technology product range and Innovative manufacturing methods.
- It is produced aiming at easy using, maintenance and assembly.

**OPTION:** • Z axis motion unit.



Technical Data	RSP-5kN	RSP-10kN	RSP-20kN	RSP-30kN	RSP-50kN	RSP-100kN	RSP-200kN
Maximum Carrying capacity Per Station (kg)	500	1000	2000	3000	5000	10000	20000
Maximum Workpiece Clamping Diameter (mm)	D*	D*	D*	D*	D*	D*	D*
Repeatability(mm)	0.05	0.05	0.05	0.05	0.05	0.05	0.05
Max Speed (rpm)	15	15	10	10	6	5	3

## SINGLE AXIS POSITIONER

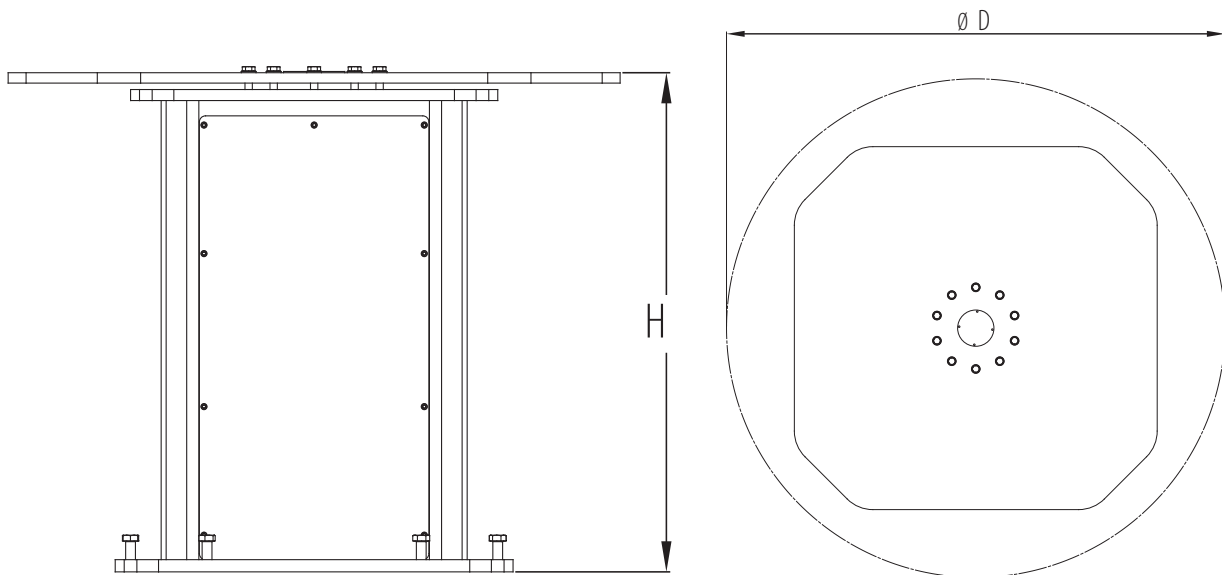


- RAM-RTP, It is single-axis positioners used for light, medium and heavy duty applications up to a carrying capacity of 20,000 kg.

- Low weight and high strength It has welded steel construction. Other It can be used as a common component with positioners.

- It is unique designs in its field with its latest technology product range and Innovative manufacturing methods.

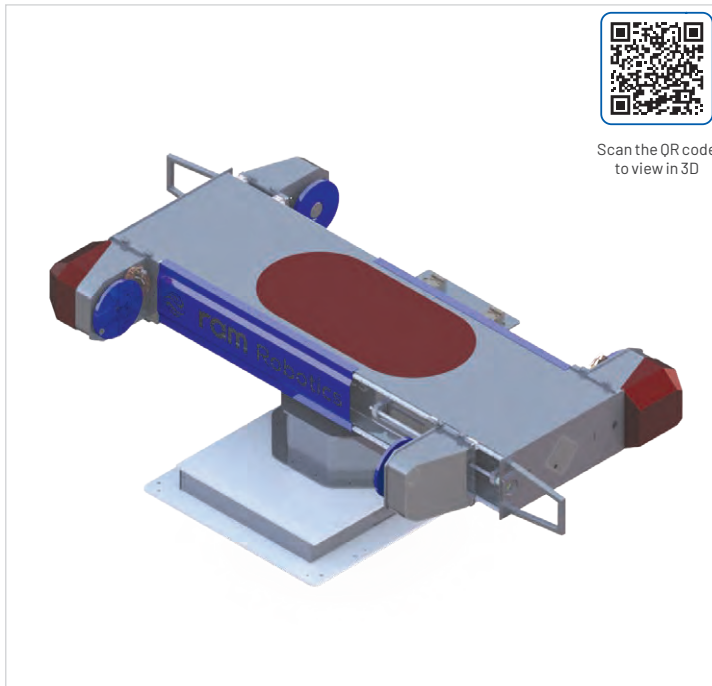
- It is produced aiming at easy using, maintenance and assembly.



Technical Data	RTP-5kN	RTP-10kN	RTP-20kN	RTP-30kN	RTP-50kN	RTP-100kN	RTP-200kN
Maximum Carrying capacity Per Station (kg)	500	1000	2000	3000	5000	10000	20000
Maximum Workpiece Clamping Diameter (mm)	1500	1500	1500	D*	D*	D*	D*
Repeatability(mm)	0.05	0.05	0.05	0.05	0.05	0.05	0.05
Max Speed (rpm)	10	10	8	5	5	5	4



## H TYPE POSITIONER



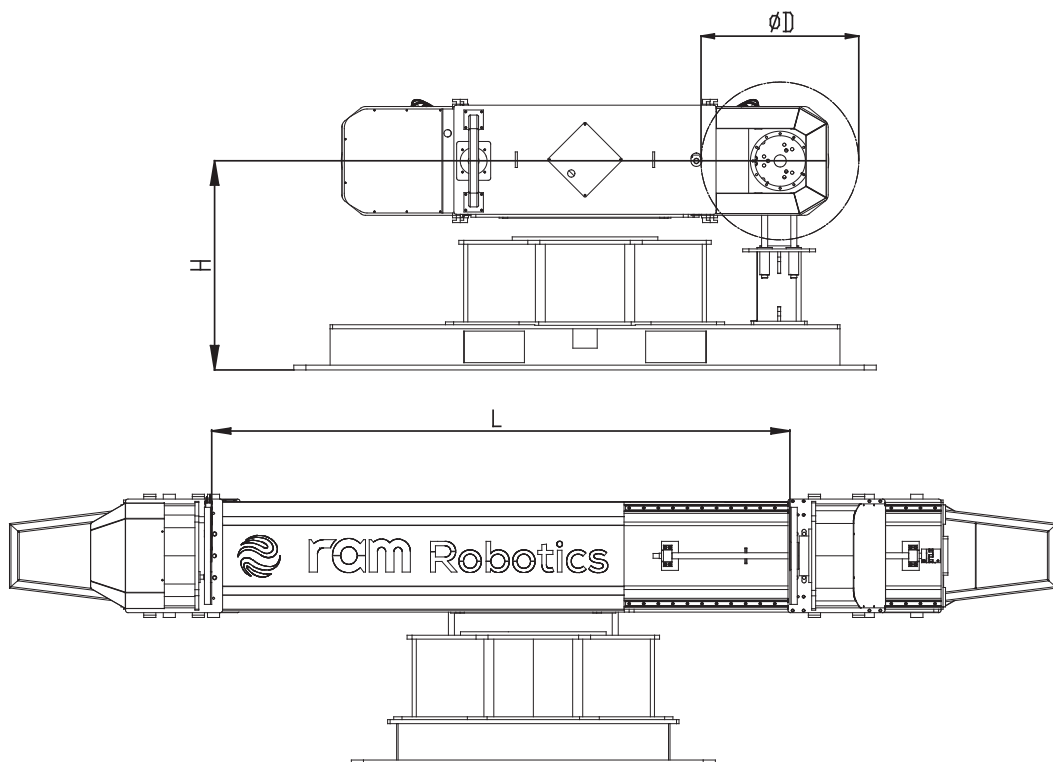
- RAM-RHP, They are two-axis H type positioners used for light, medium and heavy duty applications up to a carrying capacity of 20,000 kg.

- Low weight and high strength It has welded steel construction. Other It can be used as a common component with positioners.

- It is unique designs in its field with its latest technology product range and Innovative manufacturing methods.

- It is produced aiming at easy using, maintenance and assembly.

**OPTION:** Custom paint color.



Technical Data	RHP-5kN	RHP-10kN	RHP-20kN	RHP-30kN	RHP-50kN	RHP-100kN	RHP-200kN
Maximum Carrying Capacity Per Station (kg)	500	1000	2000	3000	5000	10000	20000
Maximum Workpiece Clamping Diameter (D)(mm)	L*	L*	L*	L*	L*	L*	L*
Repeatability(mm)	0.05	0.05	0.05	0.05	0.05	0.05	0.05
Max Speed (rpm)	10	10	8	6	6	4	3



# GANTRY TYPE ROBOT POSITIONERS

---

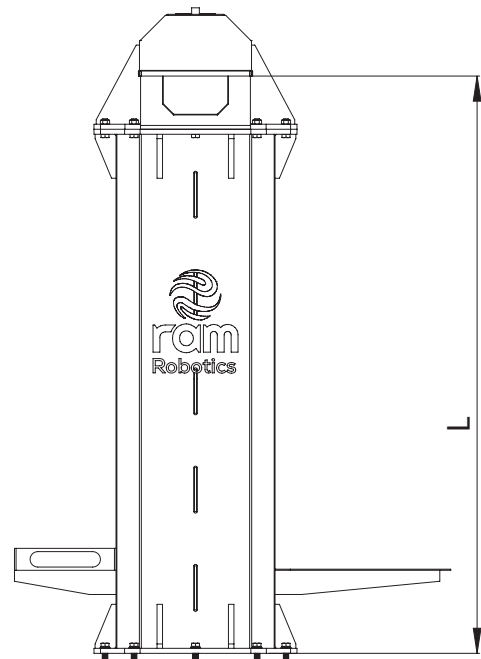
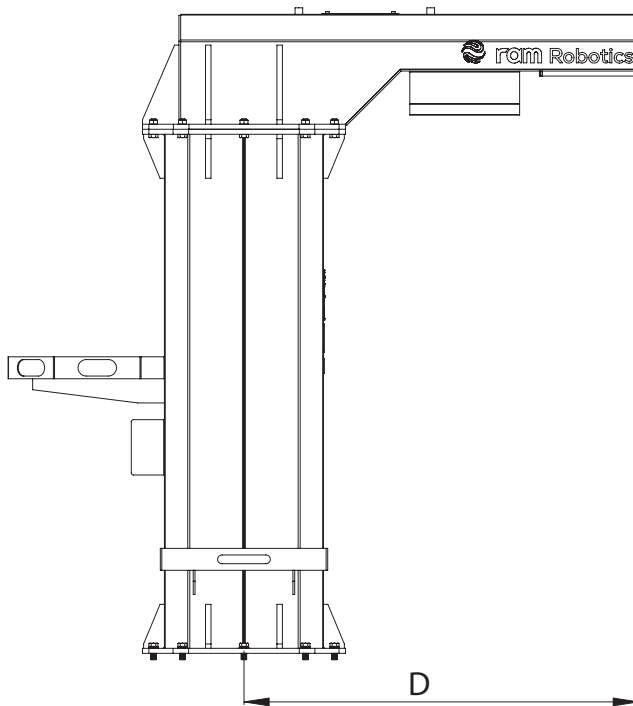
## C FRAME



C- FRAME, fixed to the position of the robot relative to the workpiece. It is manufactured by being determined in special dimensions. this arm provides better access to the workpiece and helps to weld larger workpieces. makes it more efficient. The C-Frame is mounted directly on the floor or slider.

### OPTIONS:

- Special paint color.
- Adjustable robot base height.



Technical Data	RCF-1000	RCF-2000	RCF-3000
Maximum Carrying Capacity (kg)	500	1000	2000
Maximum ROBOT Mounting Radius (mm)	2000	D*	D*
Maximum Workpiece Clamping Height (mm)	L*	L*	L*



## PILLAR



- RAM- Pillar Gantry systems are structures used for medium and heavy duty applications, increasing the robot's reach and making it easier to access the workpiece.

- It can be used in special processes as double wire welding (TWIN TORCH), laser, plasma and cutting.

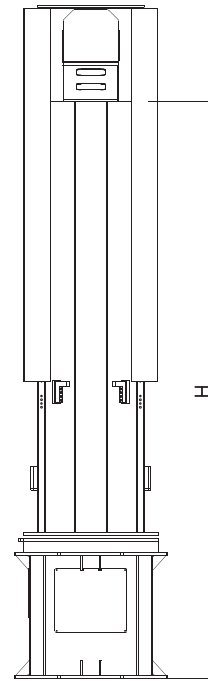
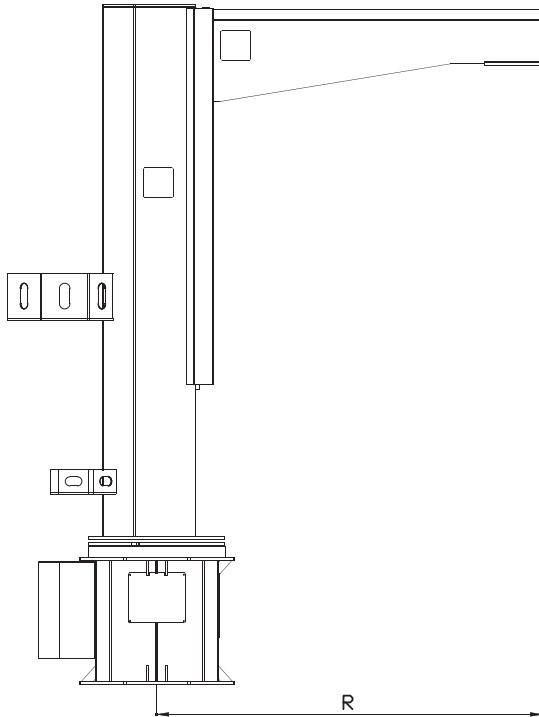
- It has low weight and high strength welded steel structure. It can be used as a common component with other structures.

- It is unique designs in its field with its latest technology product range and Innovative manufacturing methods

- It is produced aiming at easy using, maintenance and assembly

### OPTIONS:

- Special paint color.
- Slider can be added.



Technical Data	RGP-1000
Maximum Carrying Capacity (kg))	1000
Maximum ROBOT Mounting Radius (mm)	R*
Maximum Z Axis Height (mm)	H*
Maximum Y Axis Length (mm)	L-1000 mm

## GANTRY



- RAM-Gantry Cartesian systems are structures used for medium and heavy duty applications, increasing the robot's reach and making it easier to access the workpiece.

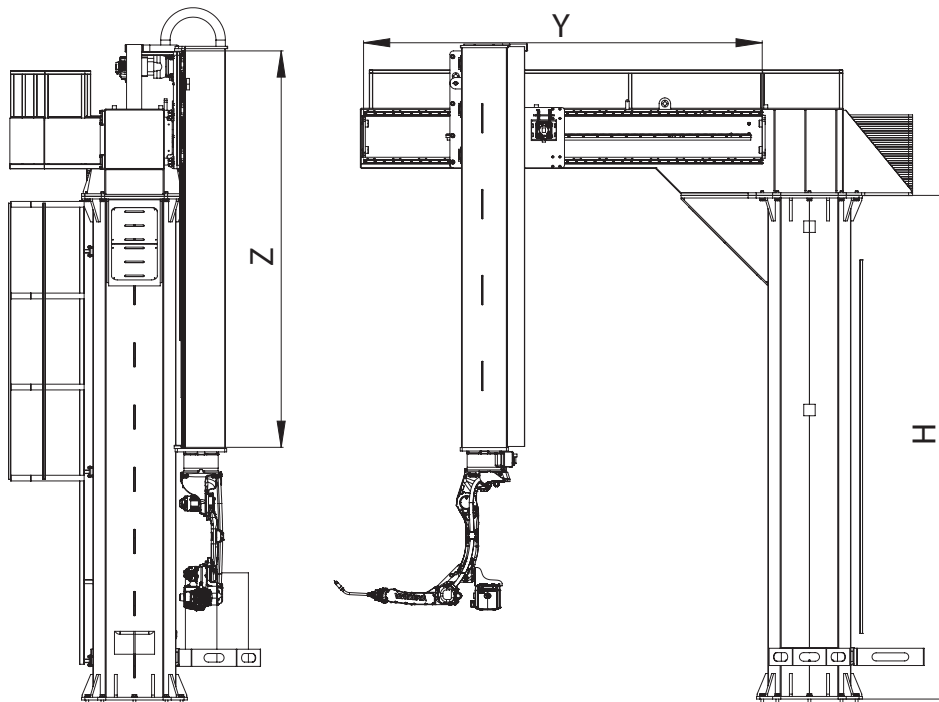
- It can be used in special processes as double wire welding (TWIN TORCH), laser, plasma and cutting.

- Low weight and high strength It has welded steel construction. As a common component with other structures

- It is unique designs in its field with its latest technology product range and Innovative manufacturing methods

- It is produced aiming at easy using, maintenance and assembly

**OPTION:** Special paint color.

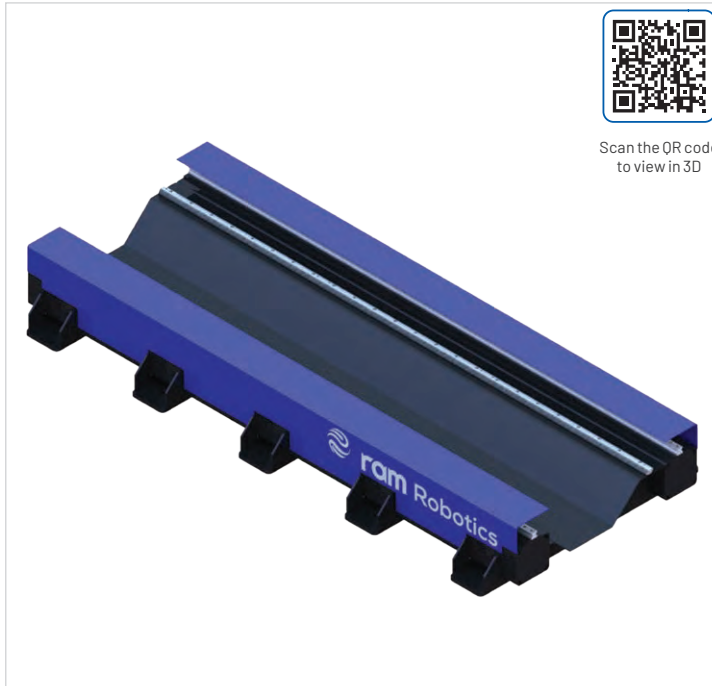


Technical Data	RG
Y Axis Travel Length (mm)	L*
X Axis Travel Length (mm)	Y*
Z Axis Travel Length (mm)	Z*
Repeatability(mm)	0.05



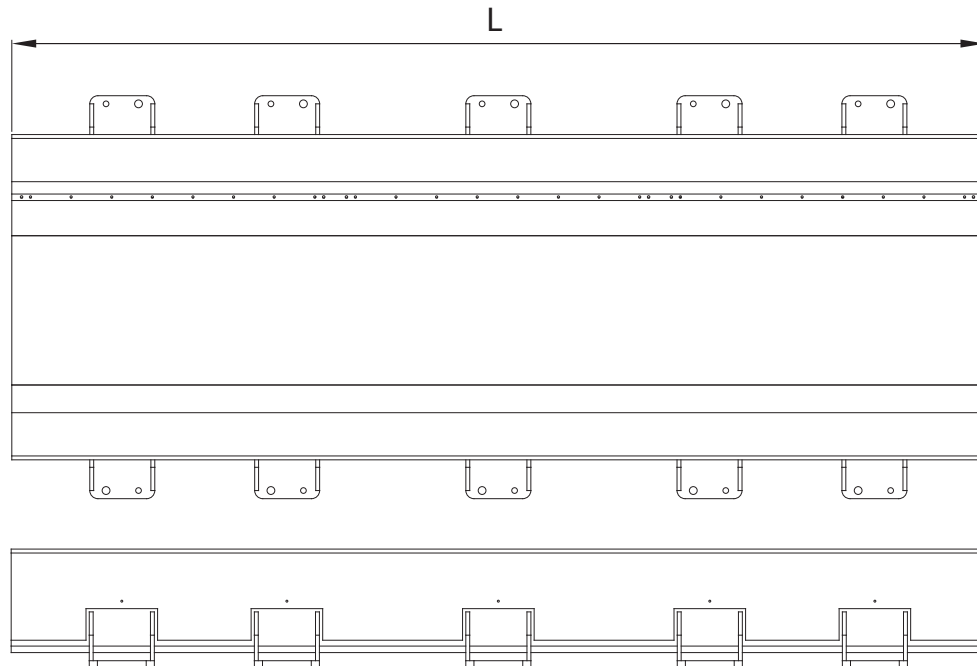
**SLIDER** \_\_\_\_\_

## SLIDER



• Robotic slider systems are designed to move the robot on it horizontally to places it cannot reach and to ease the process. Suitable for MIG/MAG and TIG welding methods.

• It is especially used for welding large sized workpieces or in multi-cell welding processes.



Technical Data	RS
Standard Length (L) (mm)	3000 (extra *module can be added)
Position Repetition Accuracy (mm)	±0.5
Motion Length (stroke) (mm)	L*





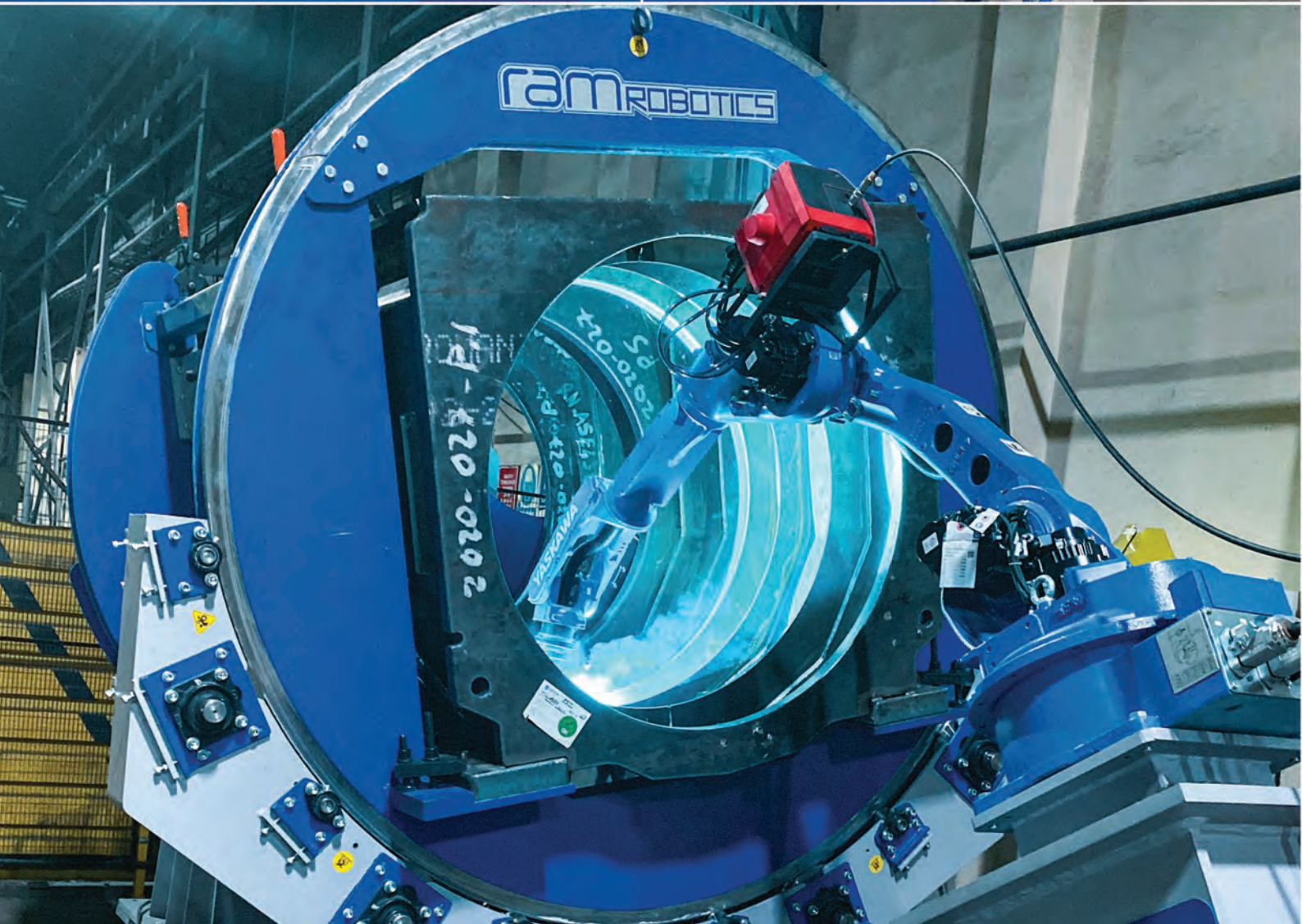
The background is a collage of various industrial robotic applications, including robotic arms, welding stations, and material handling equipment. A large, white, circular graphic is overlaid on the collage, partially obscuring some of the images. The text "OUR APPLICATIONS" is written in white, bold, uppercase letters across the bottom of the image.

# OUR APPLICATIONS



# ENERGY SECTOR

1









# CENTRIFUGE TECHNOLOGIES SECTOR

2



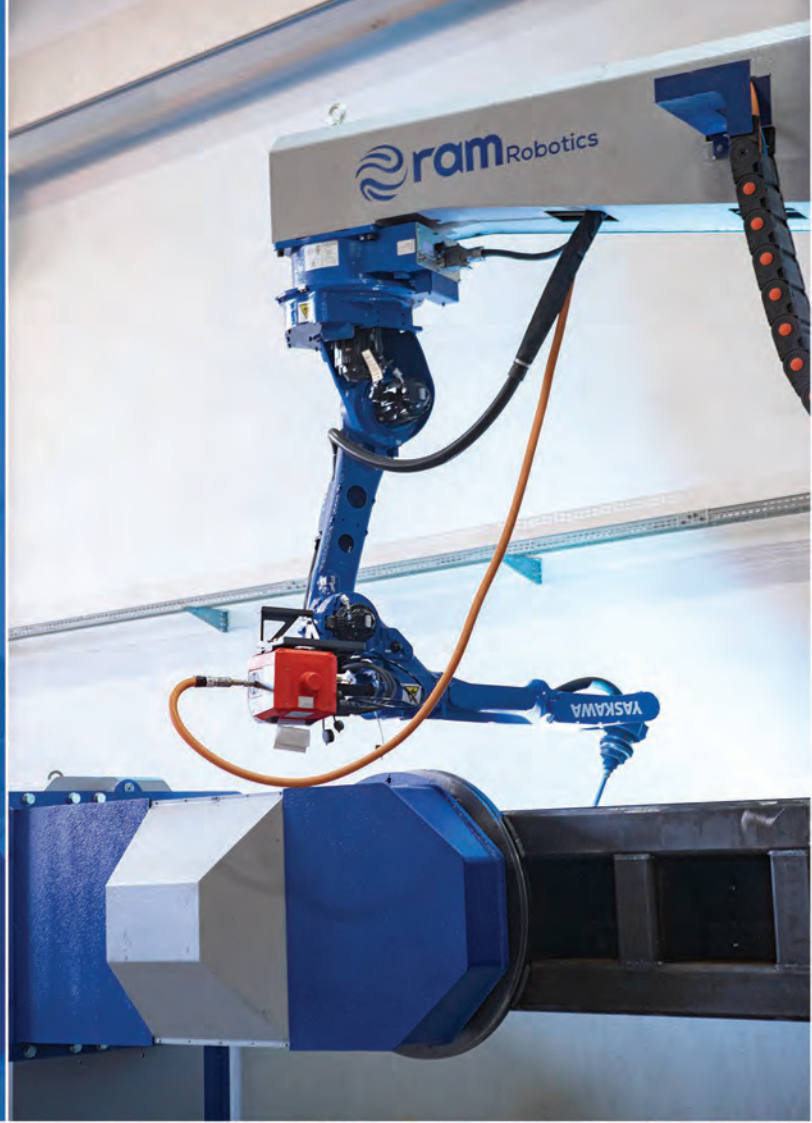






# RAIL SYSTEMS SECTOR

3









# HEAVY INDUSTRY SECTOR

4



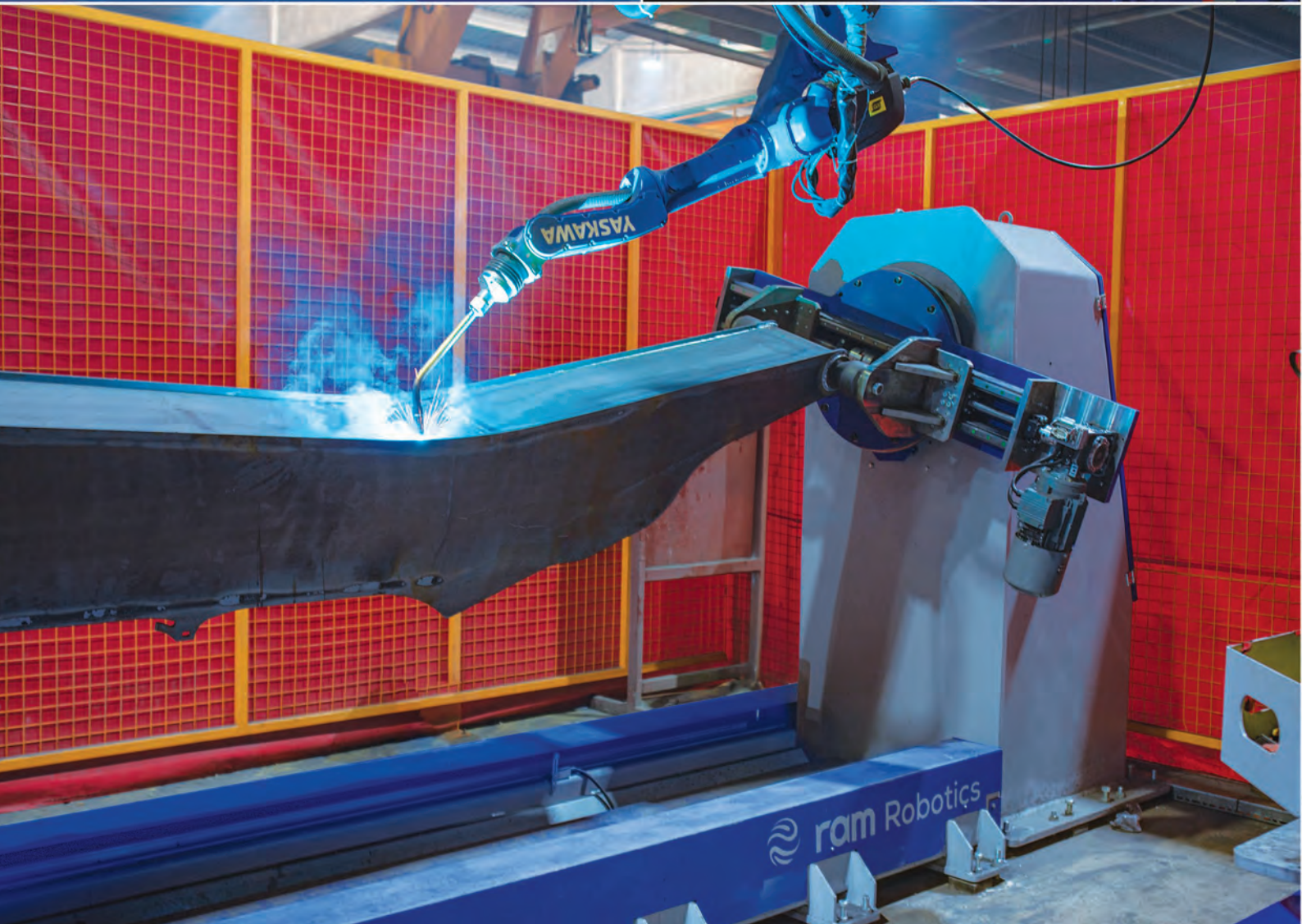






# CONSTRUCTION MACHINERY SECTOR

5







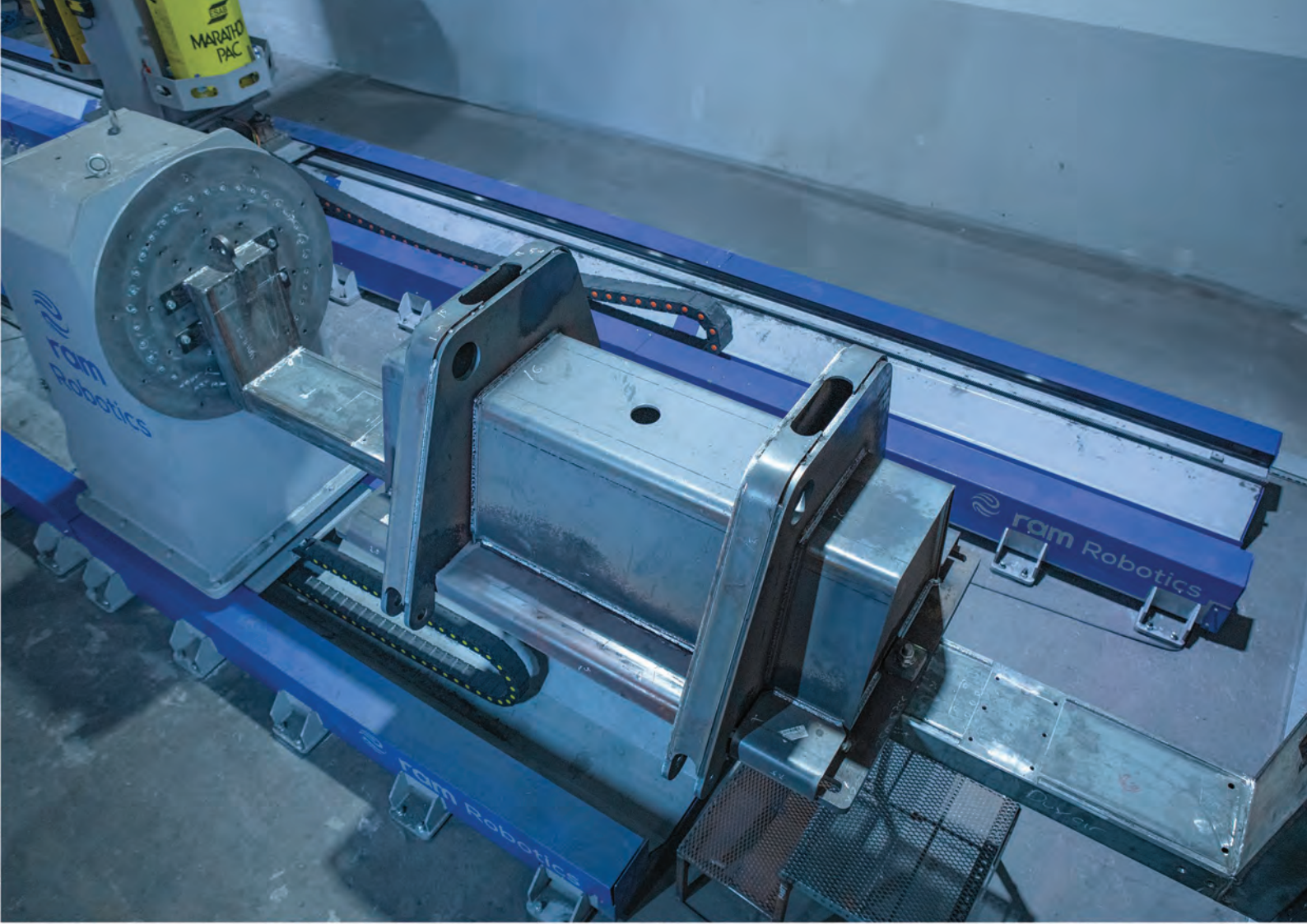


# CONSTRUCTION MACHINERY SECTOR

6









# CONSTRUCTION MACHINERY SECTOR

ram  
Robotics

7









# CONSTRUCTION MACHINERY SECTOR

8









# AUTOMOTIVE SECTOR

9

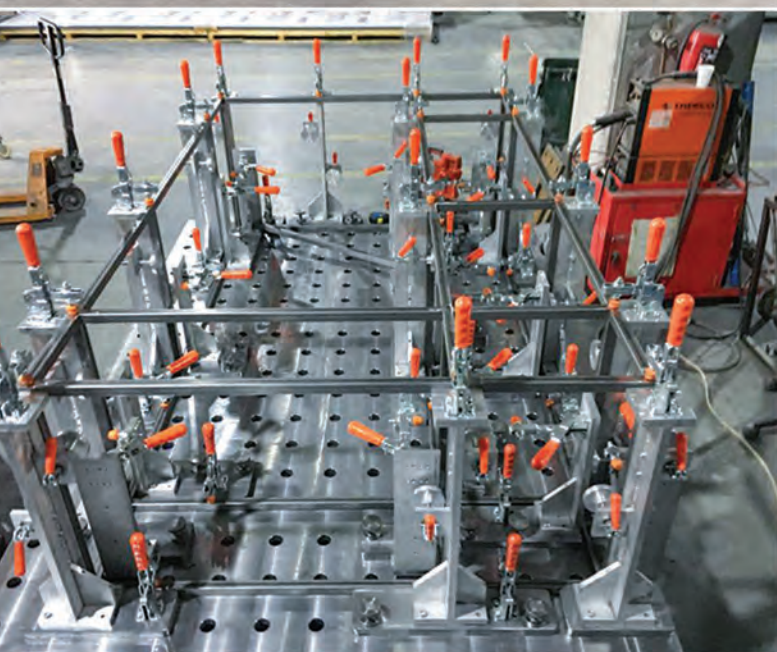




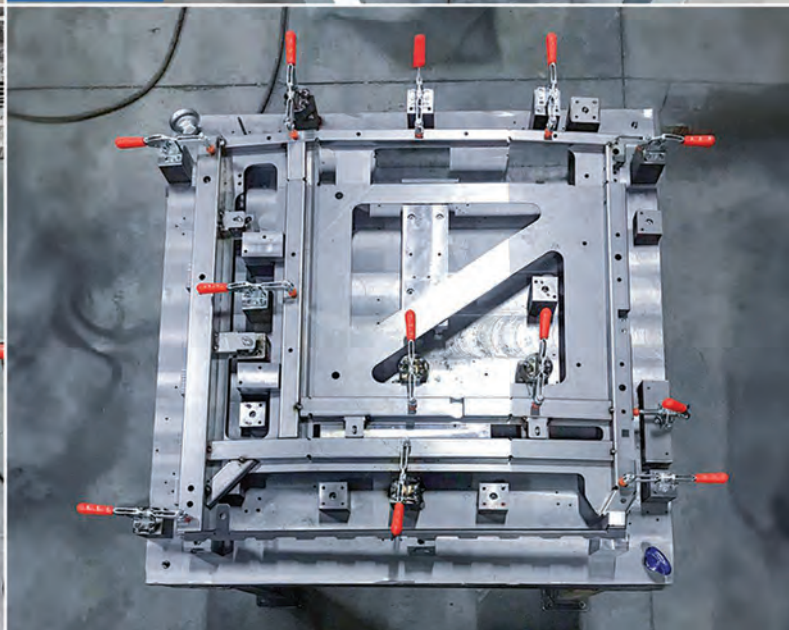
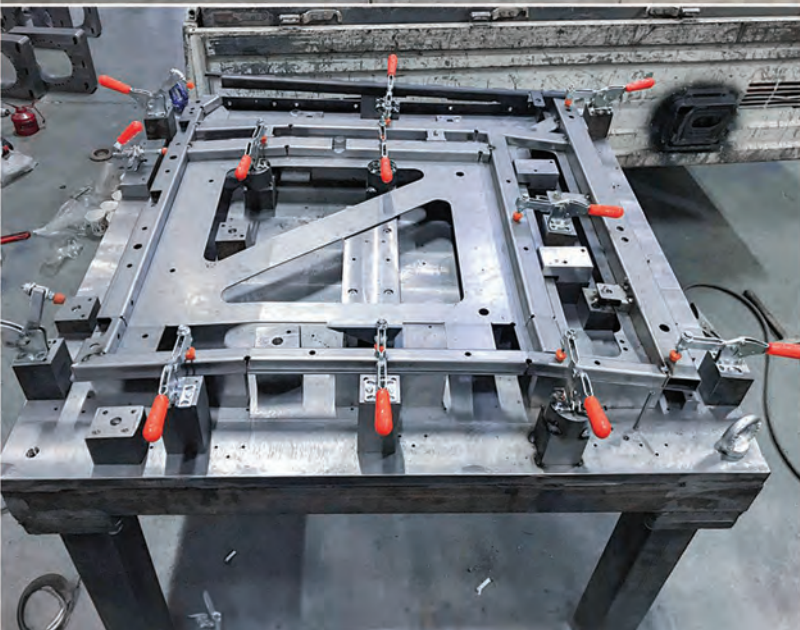
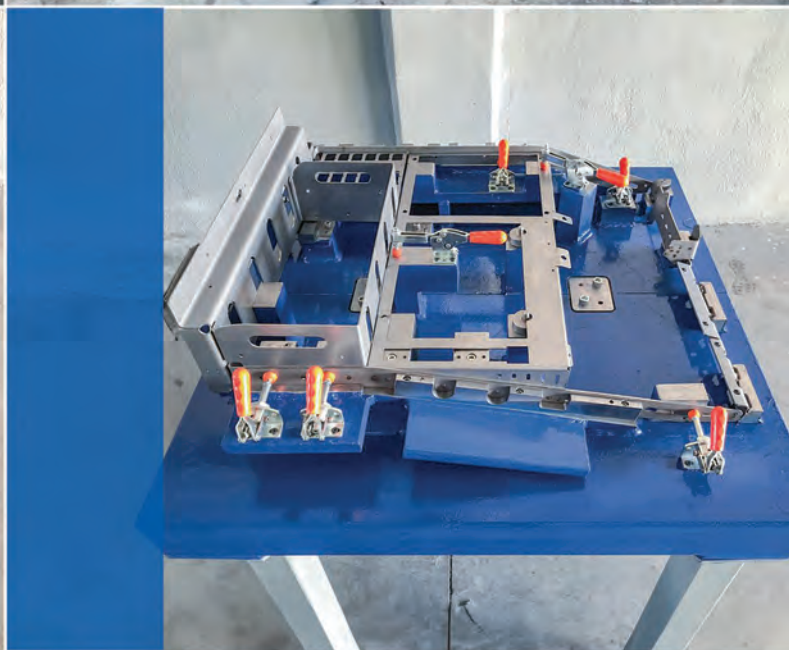
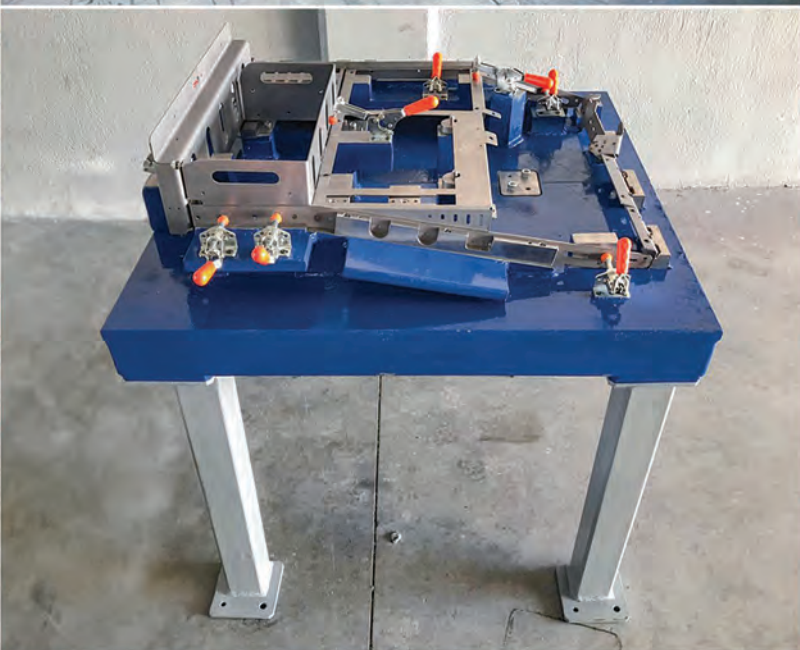




# FIXTURE SYSTEMS









# SPECIAL SOLUTIONS

11





*FOLLOWING THE PAST,*  
**OUR EYES ARE ON THE FUTURE...**





Fevzi Çakmak Mahallesi Aslım Caddesi Atiker1 Sanayi Sitesi No: 36M  
Karatay/Konya/Turkey



+90 332 503 35 58



info@ramrobotics.com.tr

Türkey

Discover  
the potential



www.ramrobotics.com.tr